

View your pension online anytime, anywhere on the AffinityWater Pension Portal

Register today in four simple steps

1 Visit www.affinitywaterpensions.co.uk
and click Register

2 Enter the following personal
information:

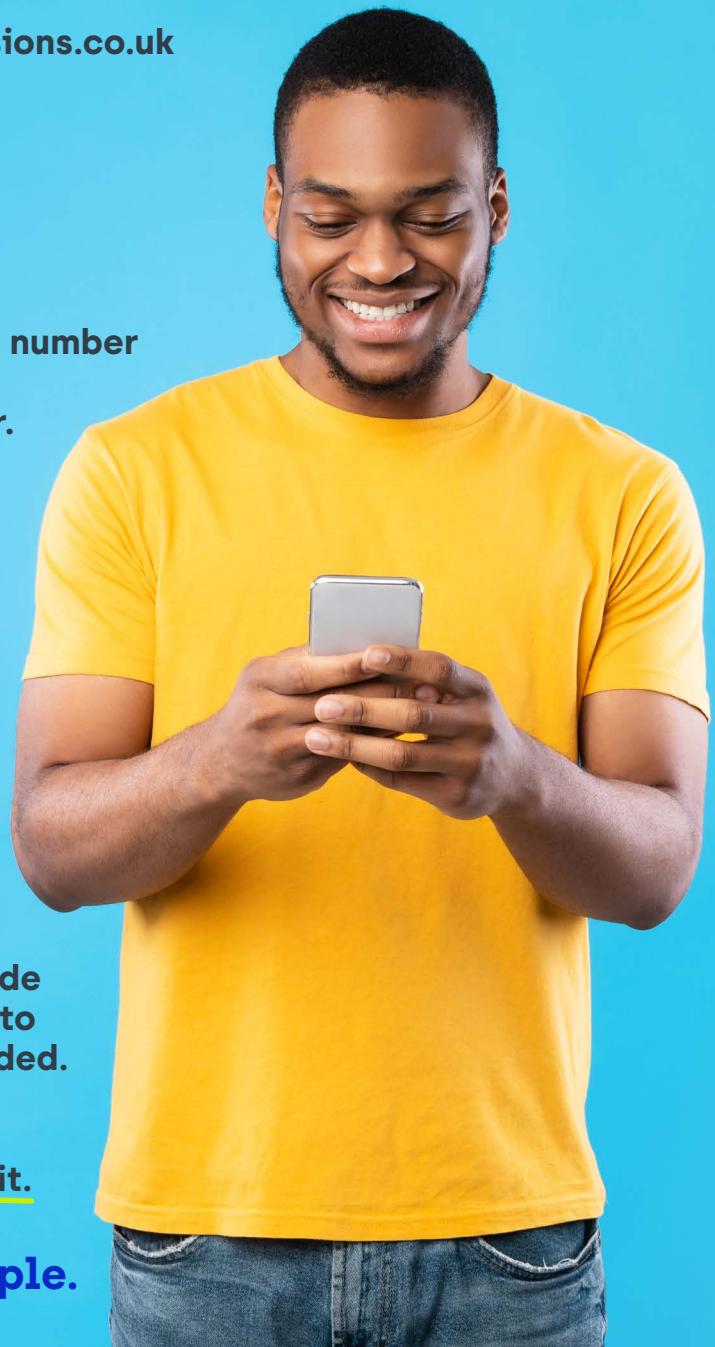
- surname
- date of birth
- personal mobile telephone number
- personal email address
- National Insurance number.

3 Choose a username
and password*.
Once you've set these up,
enter your login details
then click Submit.

*Please note your password must be
at least nine characters, include
both upper and lower case letters
and at least one number and one
special character or symbol.

4 You'll receive a One Time Code
by text message from PRISM to
the mobile number you provided.
Enter the code within
30 minutes to complete your
registration, then click Submit.

That's all there is to it. Simple.



Need help?

Call the Hymans Robertson helpline on 0207 082 6182
or email affinity@hymans.co.uk

View your pension online anytime, anywhere on the Affinity Water Pension Portal

 www.affinitywaterpensions.co.uk

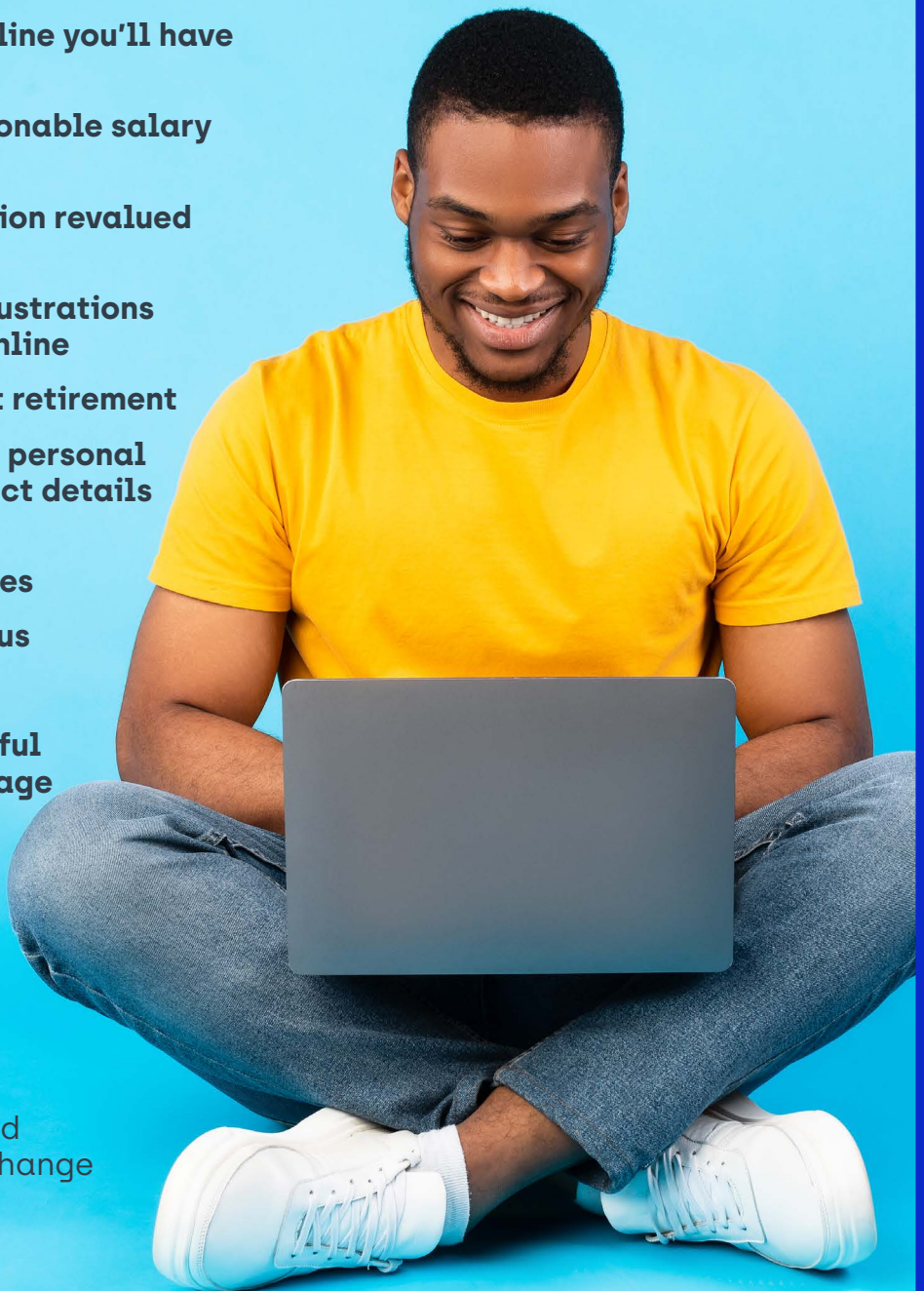
Once you've registered online you'll have access to:

- ✔ see your current pensionable salary and service details
- ✔ view your annual pension revalued to a current date
- ✔ submit requests for illustrations and view the results online
- ✔ model your benefits at retirement
- ✔ check and amend your personal information and contact details
- ✔ add and update your nominated beneficiaries
- ✔ tell us how you prefer us to contact you

You'll also find lots of useful information on the homepage from factsheets to recent announcements and news about the plan.

Don't forget to...

- review your pension information regularly
- amend your personal and contact details if they change
- update your nominated beneficiaries details.



Security matters

To protect your information you'll receive a One Time Passcode by text message from PRISM each time you log in